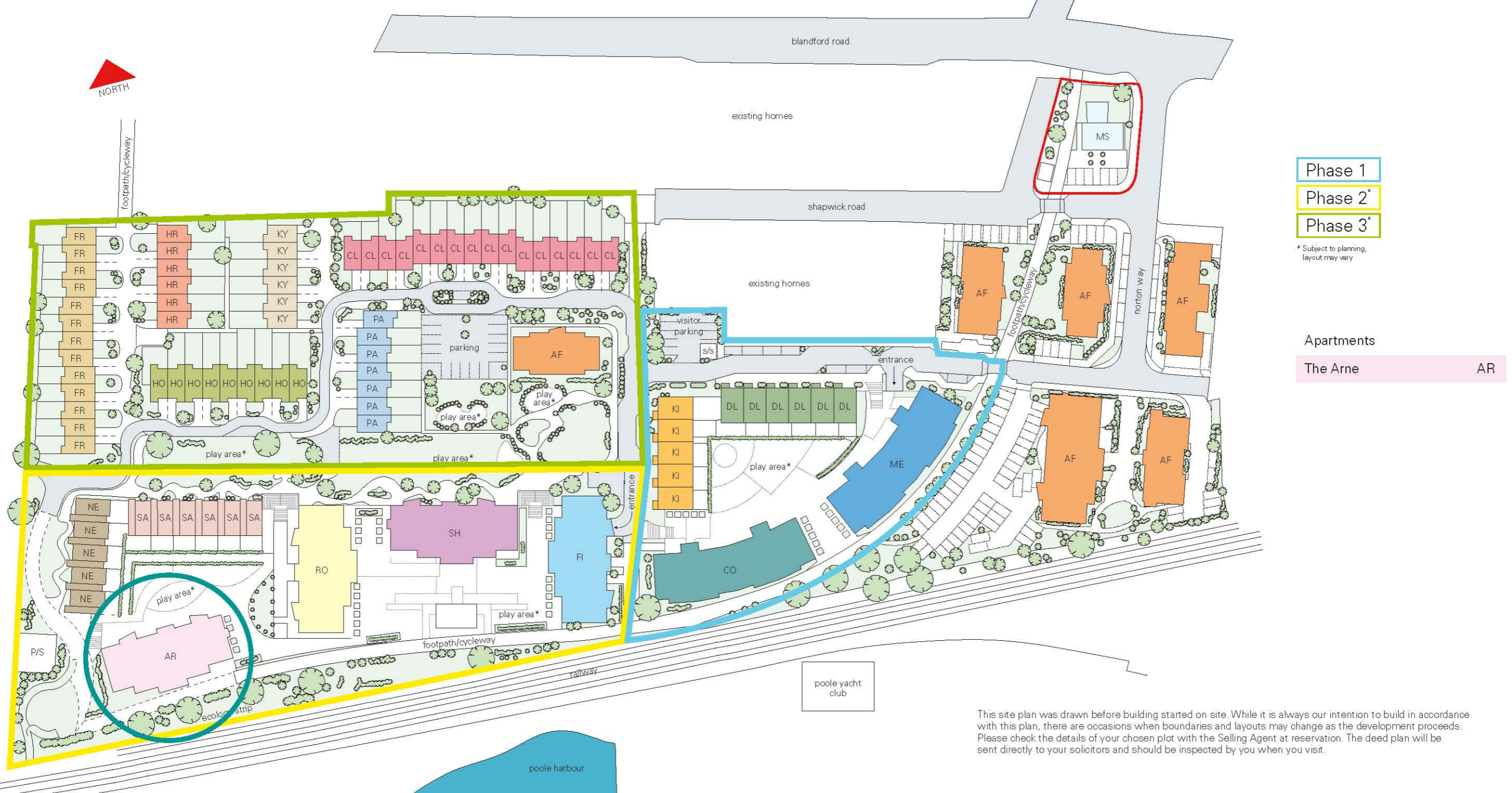




Computer generated image shows the Aime apartments. Please note there is no direct access to the beach from the development.



Photograph shows a view of Hamworthy Park.



- Phase 1
- Phase 2*
- Phase 3*

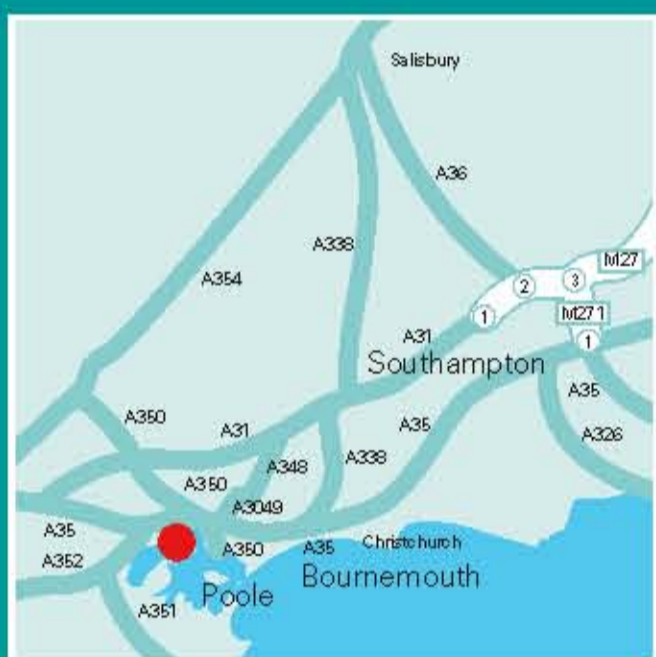
* Subject to planning, layout may vary

Apartments
The Arne AR

This site plan was drawn before building started on site. While it is always our intention to build in accordance with this plan, there are occasions when boundaries and layouts may change as the development proceeds. Please check the details of your chosen plot with the Selling Agent at reservation. The deed plan will be sent directly to your solicitors and should be inspected by you when you visit.



Photograph shows view of Poole Harbour



harbour reach

Bryant at Harbour Reach
Shapwick Road
Poole
Dorset
BH15 4AP

Marketing Suite open
9.30am – 5.00pm daily
or call 01202 678571

bryant.co.uk/harbourreach

Taylor Woodrow Developments Limited, 2 Princes Way, Solihull, West Midlands B91 3ES. Registered in England and Wales. No 643420.
April 2007 11437/TASO 497

PROPERTY MISDESCRIPTIONS ACT 1991

In accordance with the Property Misdescriptions Act 1991, the information contained in this document is provided for general guidelines only, and does not form the whole or any part of any offer or contract. These particulars should not be relied upon as accurately describing any of the specific matters described by any order under the Property Misdescriptions Act 1991. Customers are strongly advised to contact a Bryant Homes representative for further details and to satisfy themselves as to their accuracy. All information and computer representations contained in this document are taken from design intent material and may be subject to further design development. The dimensions given in the brochure are accurate within plus or minus 50mm. They are not intended to be used for carpet sizes, appliance sizes or items of furniture. Harbour Reach is a marketing name only and is not the confirmed postal address. All details correct at time of going to print. April 2007.

townhouse

the saltern

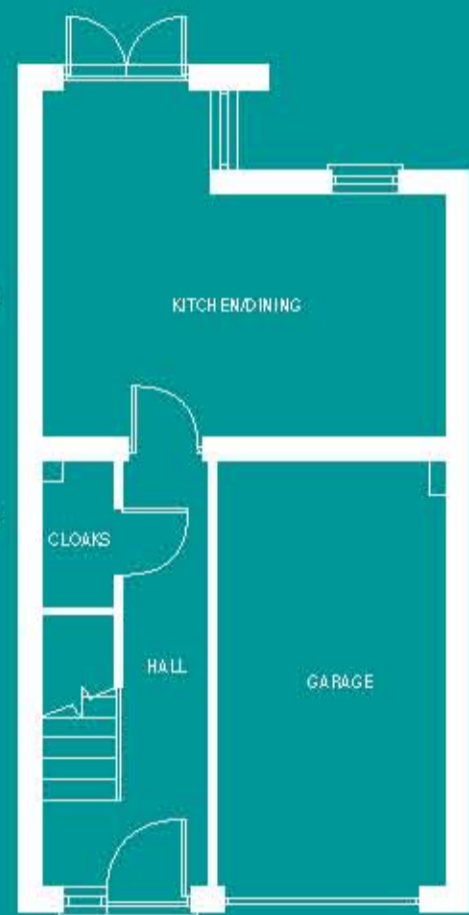


Image shows a computer-generated impression of the Froxen townhouses at Harbour Beach.

the froxen, harrey, holton, keysworth, cleavel & patchins

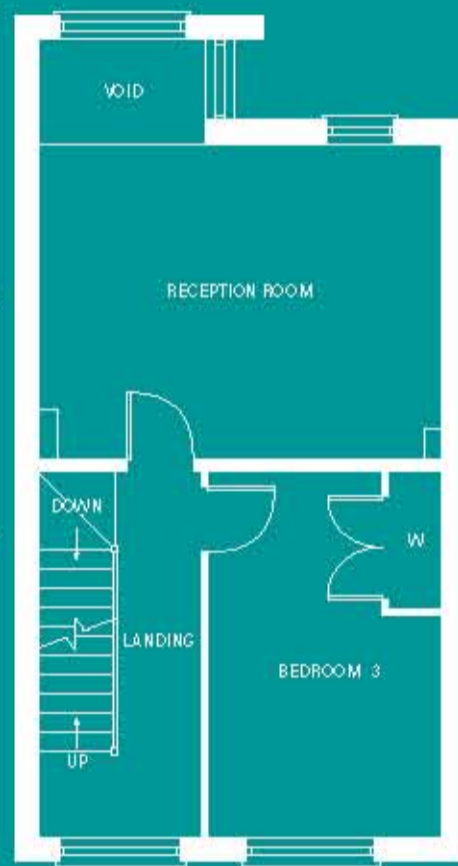
3 bedroom family homes

For SAP Energy Ratings please ask the Homes Consultant.

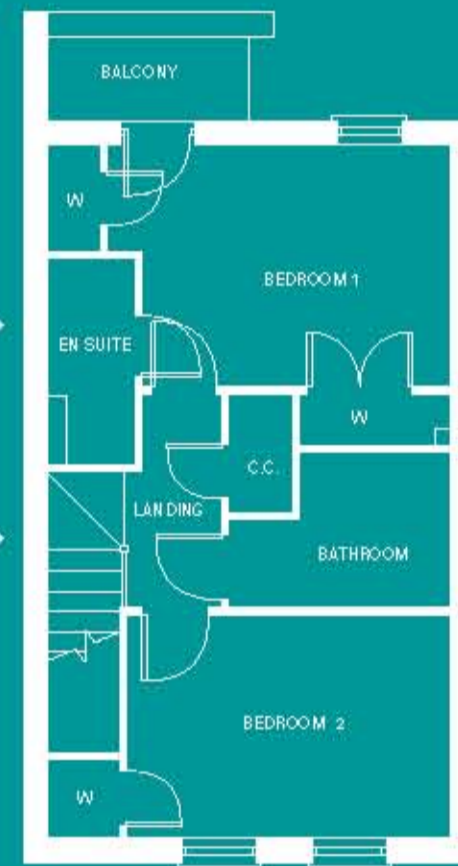


GROUND FLOOR

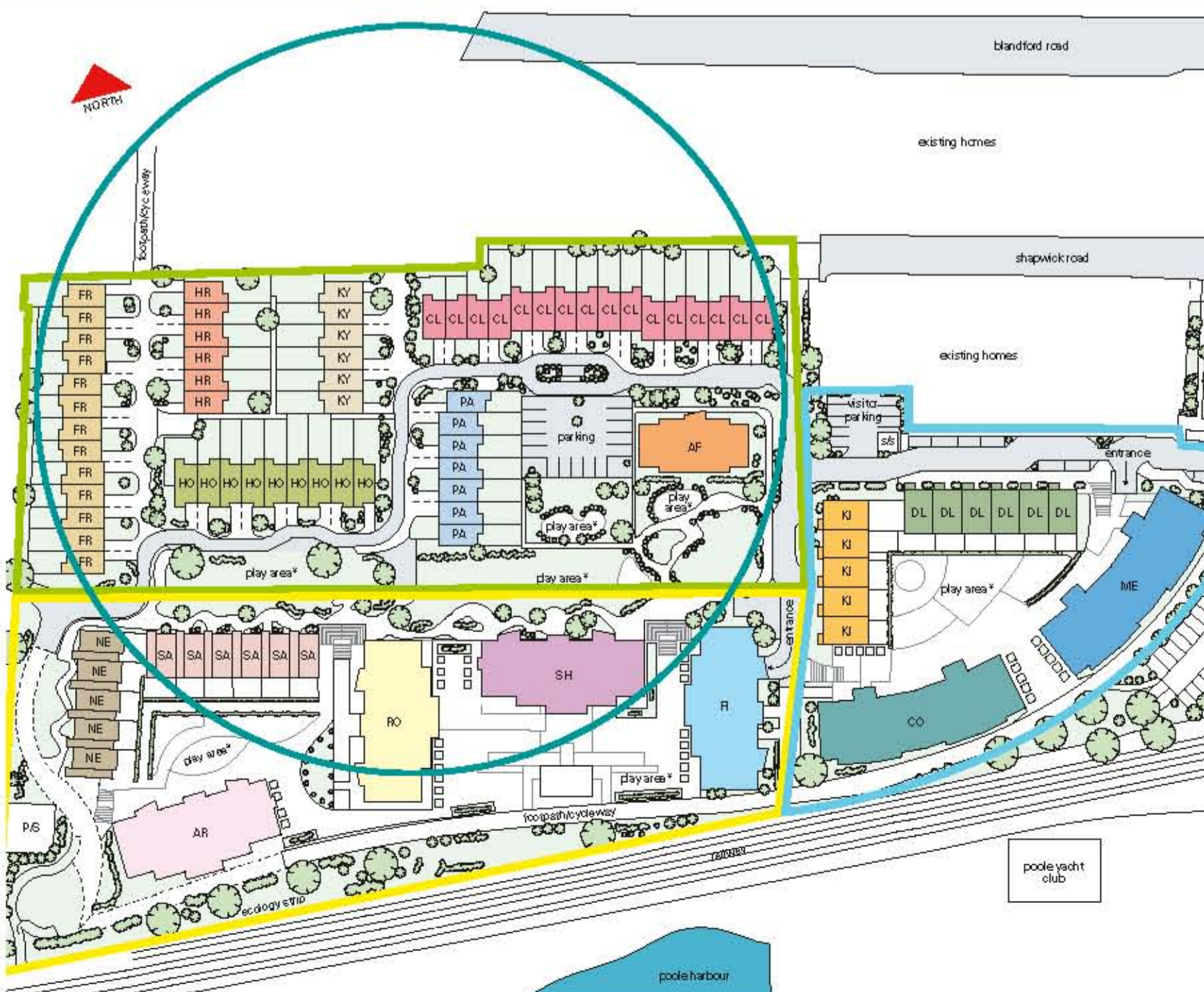
*Window positioning and size may vary. Please see the Homes Consultant for further details.



FIRST FLOOR



SECOND FLOOR



The Froxen, Harrey, Holton, Keysworth, Cleavel & Patchins

GROUND FLOOR		
Kitchen/Dining	4.80m x 2.84m	15'9" x 9'4"
FIRST FLOOR		
Reception Room	4.80m x 3.68m	15'9" x 12'1"
Bedroom 3	4.30m x 2.76m	14'1" x 9'1"
SECOND FLOOR		
Bedroom 1	3.67m x 2.82m	12'1" x 9'3"
Bedroom 2	3.83m x 2.60m	12'7" x 8'6"

Please note: Handing of plots may vary from plot to plot. We'll details to balconies and front of plots may vary to plans shown. Please see the Homes Consultant for further details.

This site plan was drawn before building started on site. While it is always our intention to build in accordance with this plan, there are occasions when boundaries and layouts may change as the development proceeds. Please check the details of your chosen plot with the Selling Agent at reservation. The deed plan will be sent directly to your solicitors and should be inspected by you when you visit.

- Phase 1
- Phase 2
- Phase 3

* Subject to planning
byout may vary

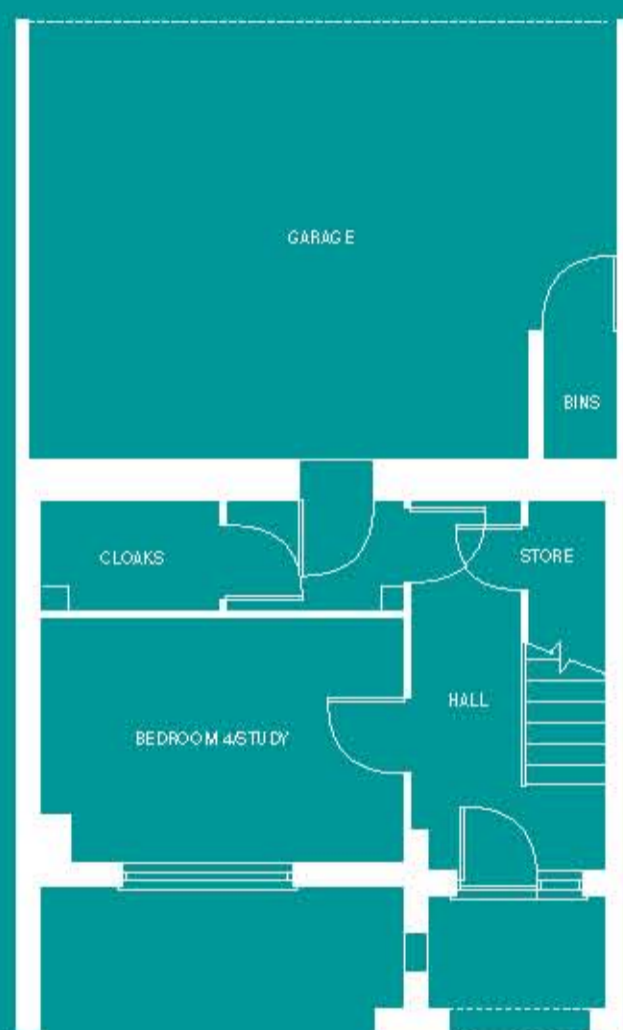


Image shows a computer generated impression of the Newton townhouses at Harbour Reach.

the newton

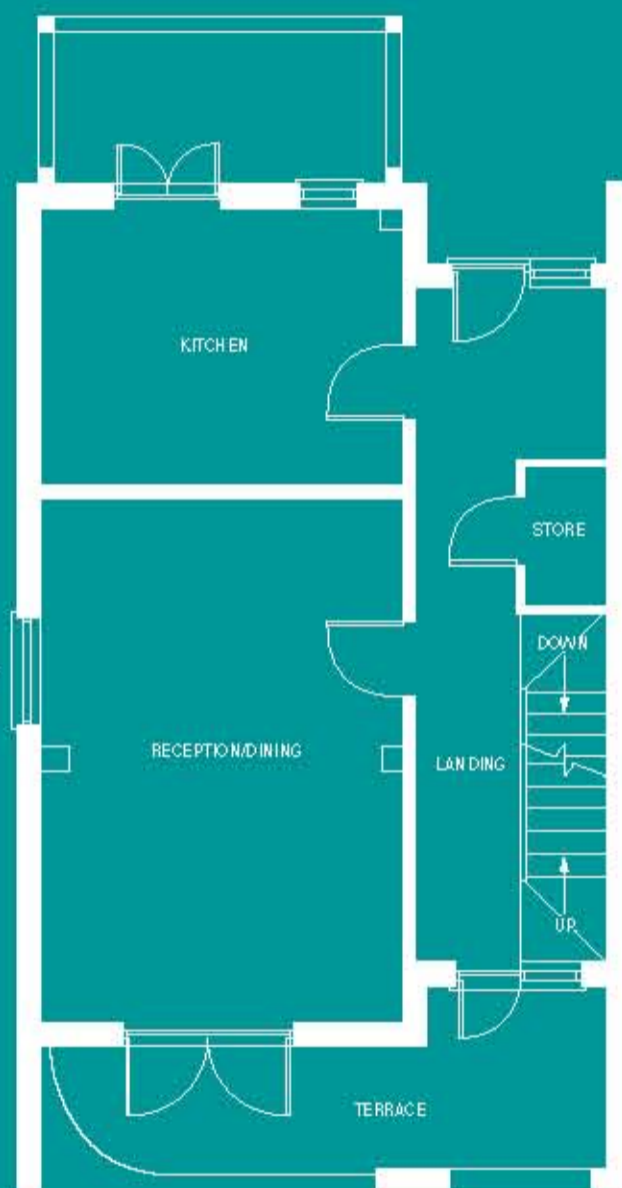
4 bedroom family home

For SAP Energy Ratings please ask the Homes Consultant.

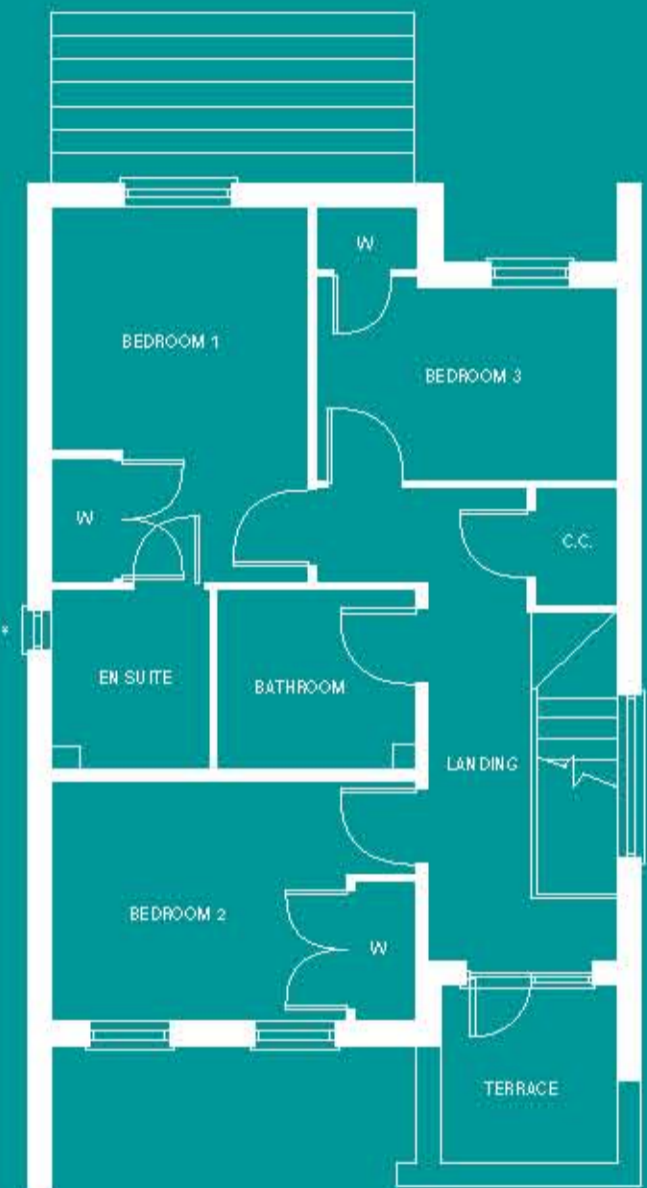


GROUND FLOOR

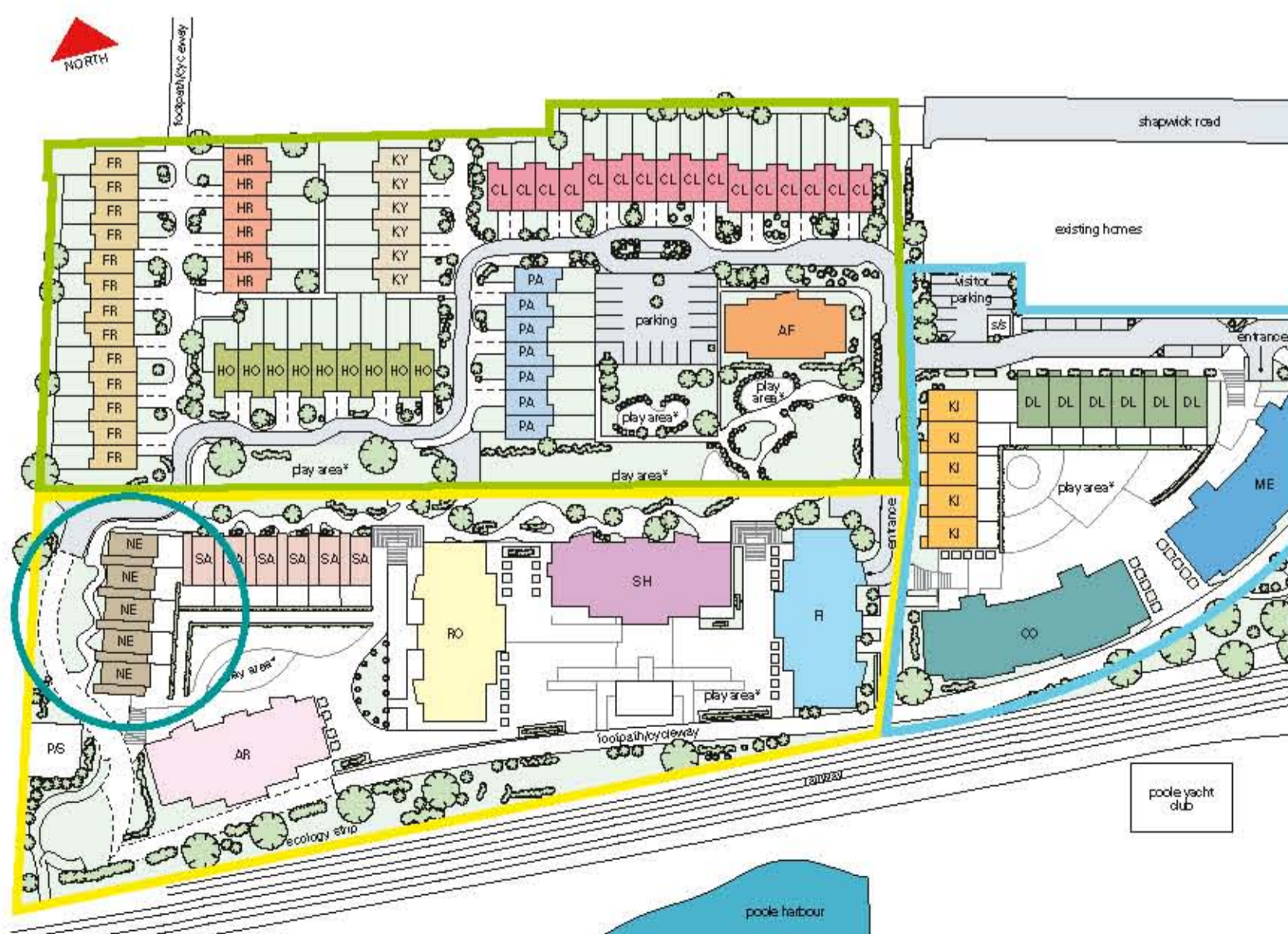
*Window positioning and size may vary. Please see the Homes Consultant for further details.



FIRST FLOOR



SECOND FLOOR



The Newton		
GROUND FLOOR		
Bedroom 4/Study	3.90m x 2.64m	12'10" x 8'8"
FIRST FLOOR		
Kitchen	3.84m x 2.94m	12'7" x 9'8"
Reception/Dining	5.72m x 3.89m	18'9" x 12'9"
SECOND FLOOR		
Bedroom 1	4.03m x 2.73m	13'3" x 9'0"
Bedroom 2	3.17m x 2.58m	10'5" x 8'6"
Bedroom 3	3.25m x 2.12m	10'8" x 7'0"

Please note: Handing of plots may vary from plot to plot. Dimensions to The Newton may vary from plot to plot. Please see the Homes Consultant for further details.

This site plan was drawn before building started on site. While it is always our intention to build in accordance with this plan, there are occasions when boundaries and layouts may change as the development proceeds. Please check the details of your chosen plot with the Selling Agent at reservation. The deed plan will be sent directly to your solicitors and should be inspected by you when you visit.

- Phase 1
- Phase 2*
- Phase 3*

*Subject to planning layout may vary