

# MEYRICK MEWS

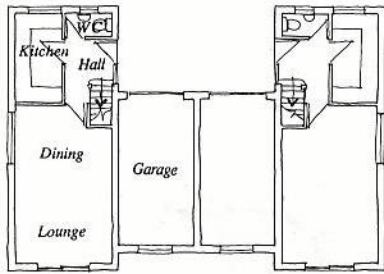
Coach House



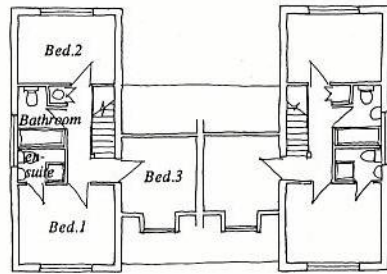
Town House

*Another quality development by local builders Ankers and Rawlings*

## Coach House

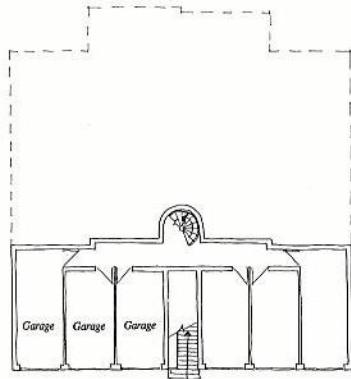


Ground floor

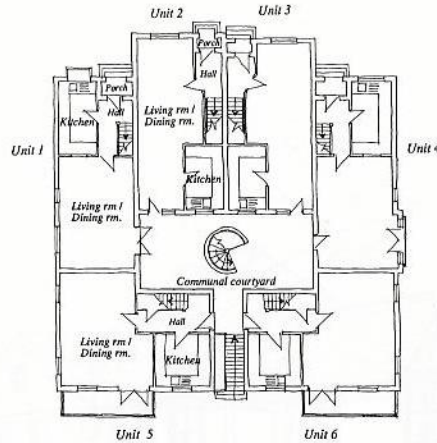


First floor

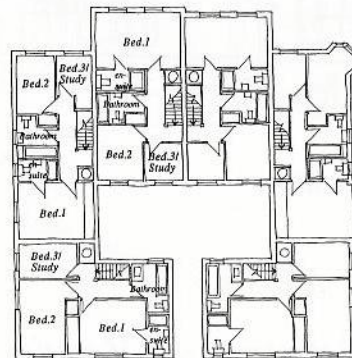
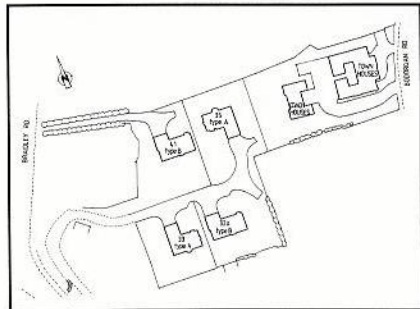
## Town House



Lower Ground floor



Ground floor



First floor

Located in Meyrick Park, one of Bournemouth's most sought after areas. The development has been individually designed to suit the location and special care has been taken over the choice of building materials to harmonise with the surroundings.

The spacious interior boasts a wide range of modern conveniences with well proportioned rooms with high ceilings. The high standard of finish throughout the property reflects the quality craftsmanship Ankers & Rawlings Developments Ltd. build into all of their homes.

Coach House			
Lounge/Dining	3700 x 6000	12' 2" x 19' 9"	
Kitchen	1850 x 3450	6' 1" x 11' 4"	
Garage	2900 x 5500	9' 6" x 18' 1"	
W.C.	1800 x 900	5' 11" x 3' 0"	
Bedroom 1	3700 x 3000	12' 2" x 9' 10"	
Shower room	1800 x 1200	5' 11" x 4' 0"	
Bedroom 2	3700 x 2600	12' 2" x 8' 6"	
Bathroom	1800 x 2300	5' 11" x 7' 7"	
Bedroom 3	2900 x 2800	9' 6" x 9' 2"	

Town House Units 1 & 4			
Lounge/Dining	4000 x 5850	13' 2" x 19' 2"	
Kitchen	2100 x 3900	6' 11" x 12' 10"	
Bedroom 1	4000 x 3000	13' 1" x 9' 10"	
En suite	2100 x 1100	6' 11" x 3' 3"	
Bedroom 2	2100 x 3150	6' 11" x 10' 4"	
Bedroom 3	1800 x 2100	5' 11" x 6' 11"	
Bathroom	2100 x 2300	6' 11" x 7' 7"	

Town House Units 2 & 3			
Lounge/Dining	3500 x 9000	11' 6" x 29' 6"	
Kitchen	2000 x 3350	6' 7" x 11' 0"	
Bedroom 1	4600 x 3000	15' 1" x 9' 10"	
En suite	1100 x 2700	3' 3" x 8' 10"	
Bedroom 2	2500 x 3000	8' 3" x 9' 10"	
Bedroom 3	2000 x 2000	6' 7" x 6' 7"	
Bathroom	2700 x 1700	8' 10" x 5' 7"	

Town House Units 5 & 6			
Lounge/Dining	4900 x 5900	16' 1" x 19' 4"	
Kitchen	2900 x 2800	9' 6" x 9' 2"	
Bedroom 1	3600 x 2900	11' 10" x 9' 6"	
En suite	1100 x 2100	3' 3" x 6' 11"	
Bedroom 2	2400 x 4000	7' 10" x 13' 1"	
Bedroom 3	3100 x 1850	10' 2" x 6' 1"	
Bathroom	2000 x 2600	6' 7" x 11' 10"	

All dimensions are approximate and are for guidance only and do not form part of any contract.

SELLING AGENTS

## FEATURES

- Well planned, individually designed accommodation
- Panelled internal doors
- Double glazed windows
- Moulded skirting & architrave
- Flat ceilings with covering
- Brass effect door furniture
- Luxury fitted kitchen units - to include waste disposal unit, hob, cooker and hood with external fan.
- Plumbing for washing machine
- Gas fired central heating and hot water system
- Glazed tiling to bathroom and kitchen
- Brick paved entrance drive
- Landscaped surroundings
- External light to front door
- Wiring installed for burgular alarm
- Ample electrical sockets
- Ample light points
- Telephone points to ground and first floors
- TV points to ground and first floors

